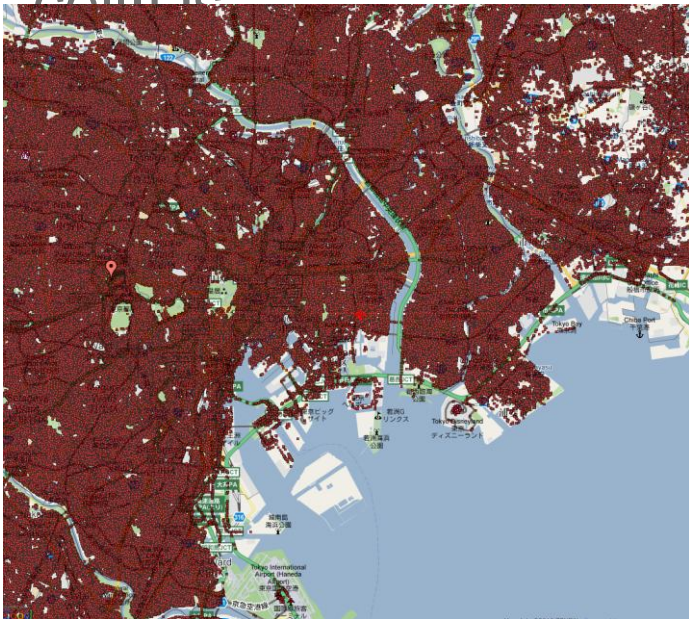


SKYHOOK°



Skyhook Overview

- Skyhook's location system combines signals from Wi-Fi, GPS and cell towers to quickly and accurately determine device location
- Deployed on almost 100m devices, 200m location requests / day
- Database of over 240m Wi-Fi access points, and millions of cellIDs

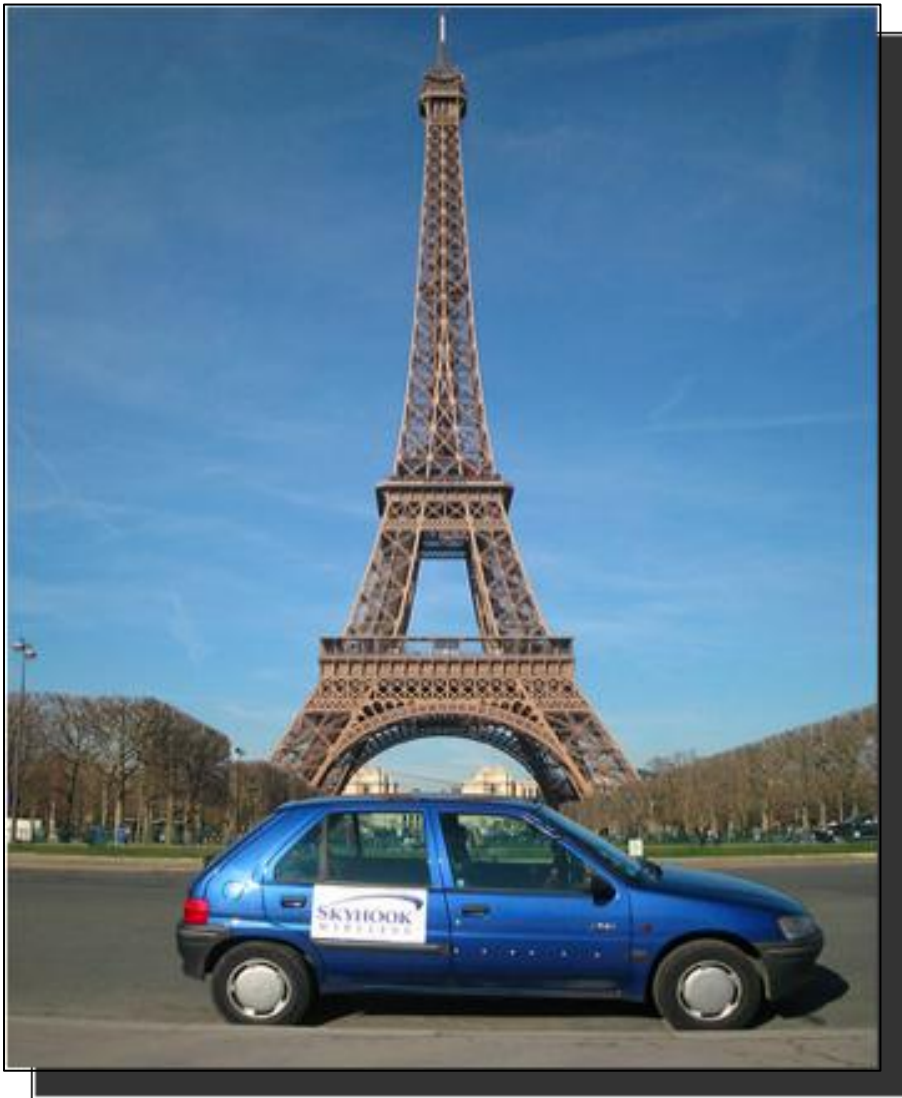


Skyhook's Wi-Fi coverage in Tokyo



Select Customers

How do we do it?



France

We drive



Korea

Core Engine SDK

- Core Engine SDK available on platforms like Android, Symbian, Windows Mobile
- Apps using Skyhook SDK include:

Rumble[®]
for people and places you love

 ALOQA

Flixster



SHOPSAVVY

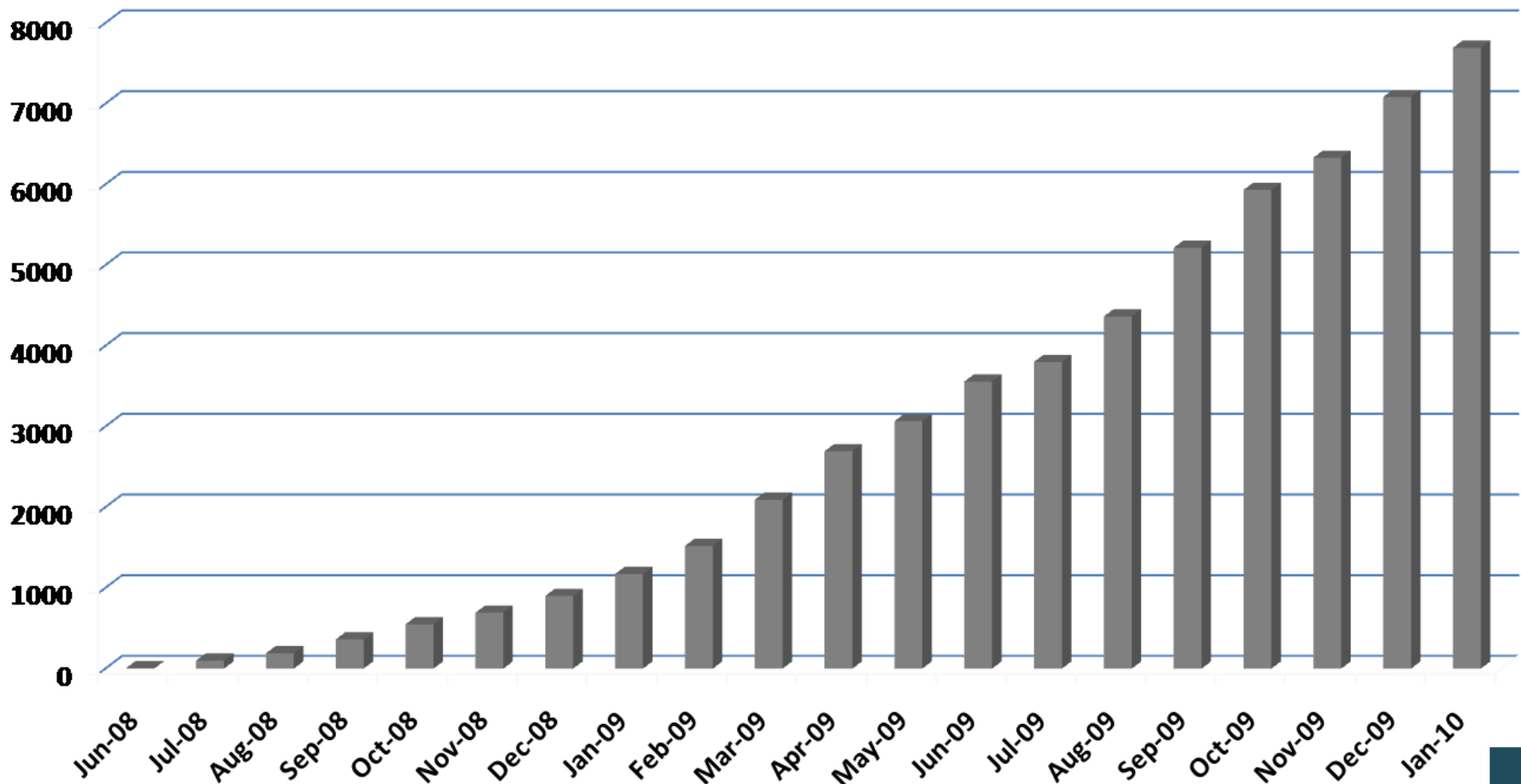

KAYAK

glympse[™]

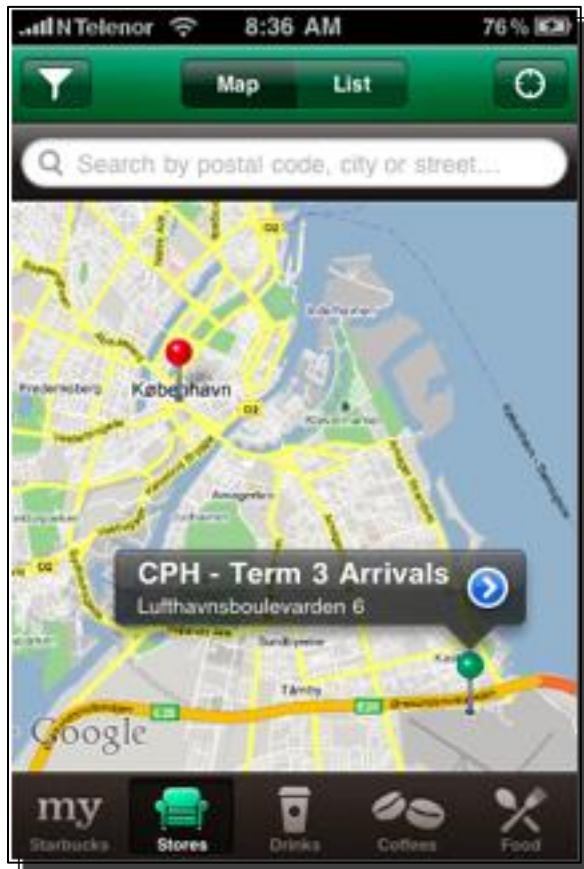
geodetic

S[°]

Location Apps Growth 2008 -2010



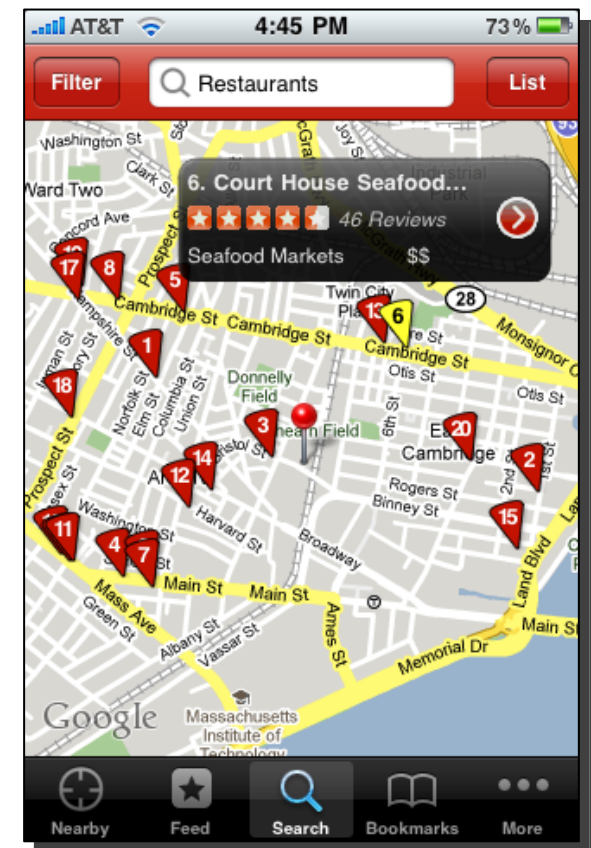
Basic mobile location



My Starbucks



AP News

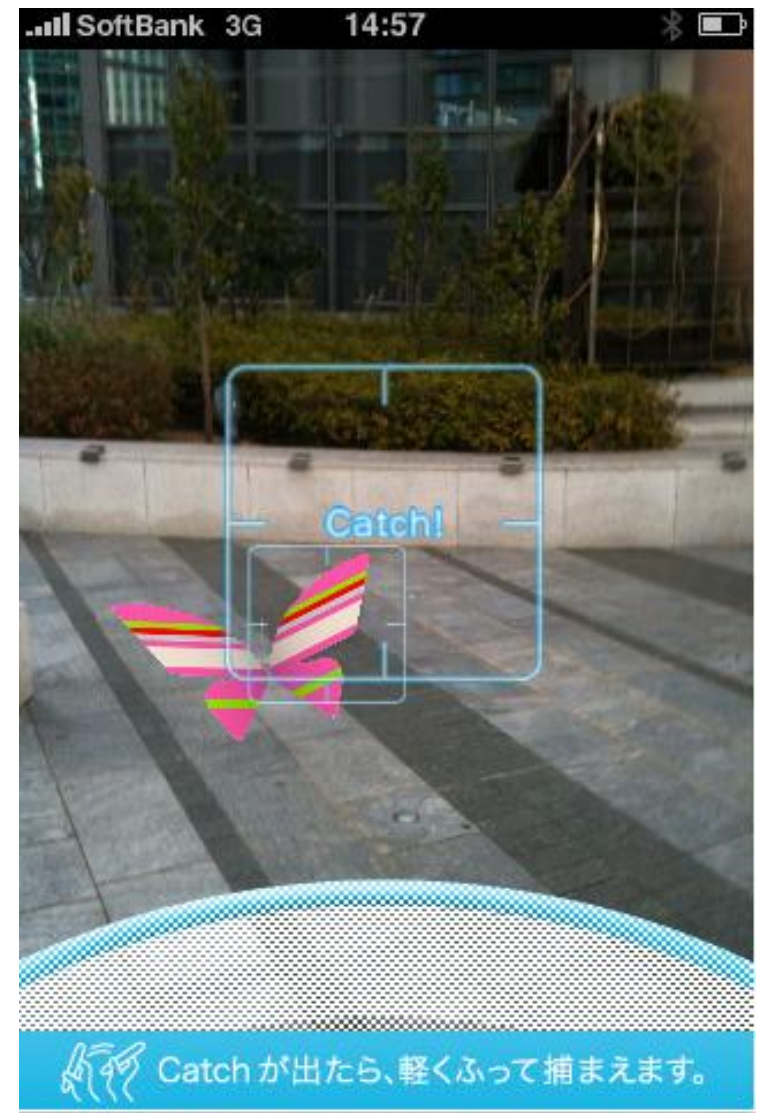


Yelp



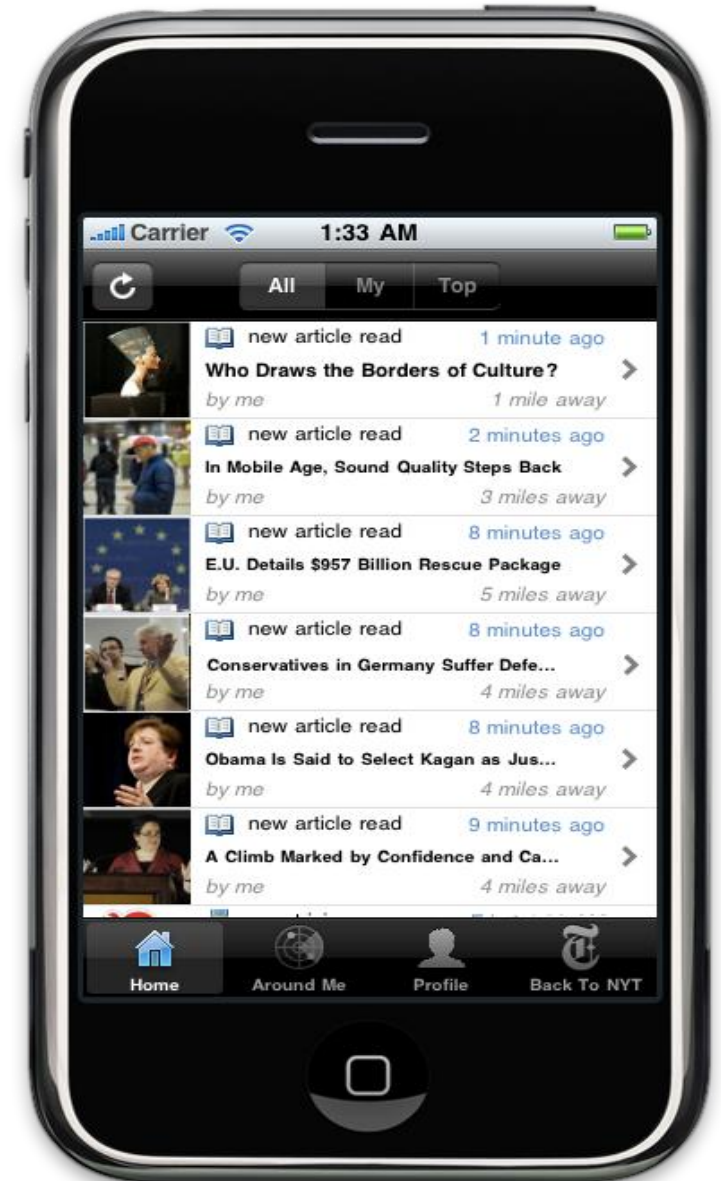
Cool Location App Example- iButterfly

- Grab the butterfly and catch a deal!

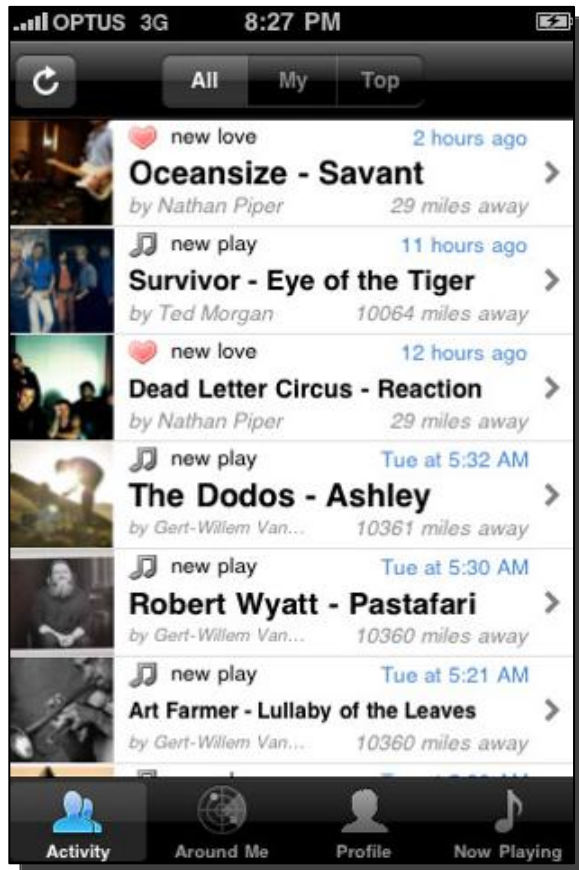


Local Faves SDK Overview

- Makes it easy to add social features to iPhone apps
- Location tagging, checking in and user rankings
- Features drive engagement, promotes viral growth
- Connect users with content being accessed nearby
- Create a community within your apps
- Free- no cost to use



Local Faves - Location Today



Sharetunes

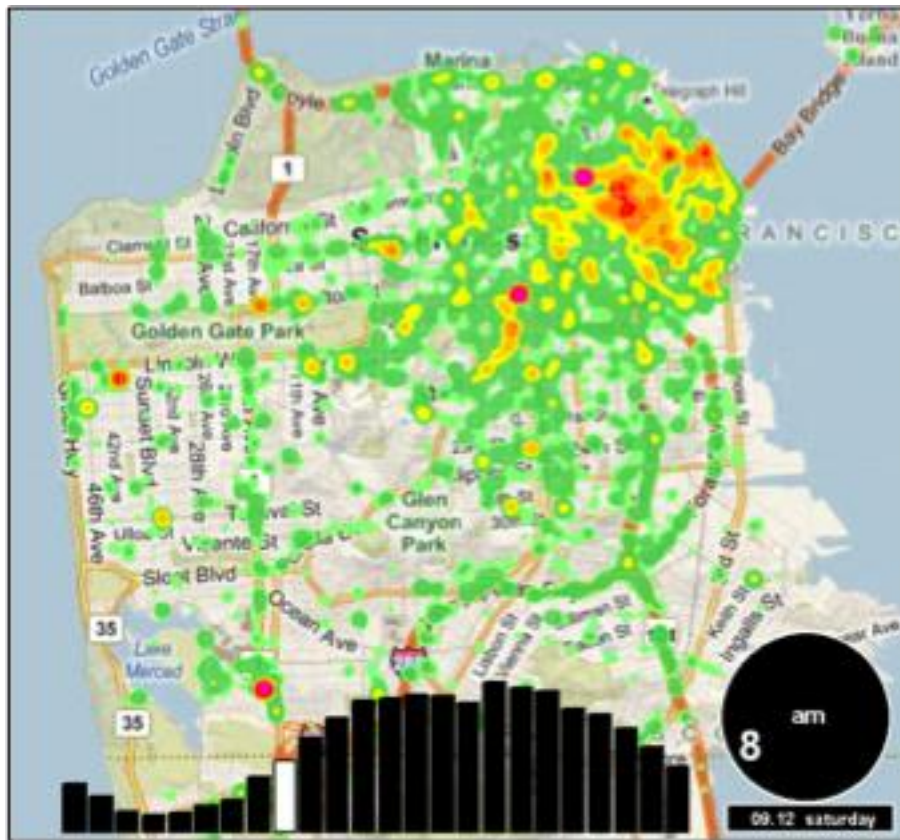


Drync



iSwig

SpotRank - San Francisco Location Requests



Saturday, 8:00am



Saturday, 10:00pm

Contact

Maggie Taylor
Marketing Manager

mtaylor@skyhookwireless.com

+1.617.314.9802

<http://www.skyhookwireless.com/developers/>

